

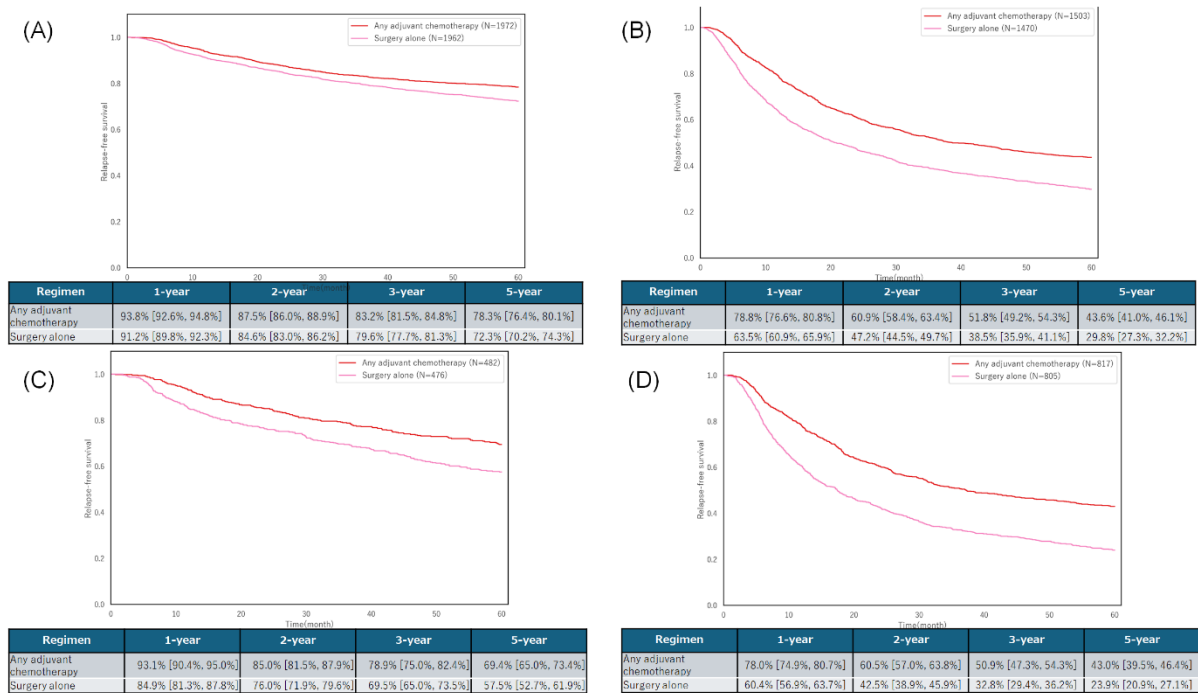
Supplemental Table S1. Patient characteristics of T1N2, T1N3, and T3N0

Characteristics	T1N2/T1N3	T3N0
	Primary gastric cancer (n = 735)	Primary gastric cancer (n = 2,728)
Age, median	70	71
Sex		
Male	424 (57.7%)	1,901 (69.7%)
Female	311 (42.3%)	827 (30.3%)
ASA-PS		
1	193 (26.3%)	580 (21.3%)
2	420 (57.1%)	1,669 (61.2%)
≥ 3	70 (9.5%)	320 (11.7%)
ECOG-PS		
0	422 (57.4%)	1,510 (55.4%)
1	149 (20.3%)	606 (22.2%)
≥ 2	45 (6.1%)	175 (6.4%)
Creatinine clearance	71.2	68.7
(mL/min), median		
Normal	394 (53.6%)	1,341 (49.2%)
Abnormal	336 (45.7%)	1,366 (50.1%)
Macroscopic morphology		
Type 0	568 (77.3%)	474 (17.4%)
Type 1	37 (5.0%)	182 (6.7%)
Type 2	76 (10.3%)	1,041 (38.2%)
Type 3	40 (5.4%)	837 (30.7%)
Type 4	2 (0.3%)	80 (2.9%)
Type 5	11 (1.5%)	106 (3.9%)
Location		
U, fundus	94 (12.8%)	926 (33.9%)
M, corpus	369 (50.2%)	1,254 (46.0%)
L, antrum and pylorus	373 (50.7%)	1,012 (37.1%)
T, total stomach	0	4 (0.1%)
D, invasion to duodenum	7 (1.0%)	61 (2.2%)
E, invasion to esophagus	3 (0.4%)	111 (4.1%)
Histological type		
Differentiated adenocarcinoma		
pap	33 (4.5%)	97 (3.6%)
tub1	109 (14.8%)	432 (15.8%)
tub2	237 (32.2%)	878 (32.2%)
Undifferentiated adenocarcinoma		
por1	108 (14.7%)	446 (16.3%)
por2	139 (18.9%)	605 (22.2%)
sig	97 (13.2%)	139 (5.1%)
muc	3 (0.4%)	67 (2.5%)
Others	9 (1.3%)	63 (2.3%)
Gastrectomy		
Total gastrectomy	130 (17.7%)	1,073 (39.3%)
Distal gastrectomy	573 (78.0%)	1,539 (56.4%)
Pylorus-preserving gastrectomy	20 (2.7%)	20 (0.7%)

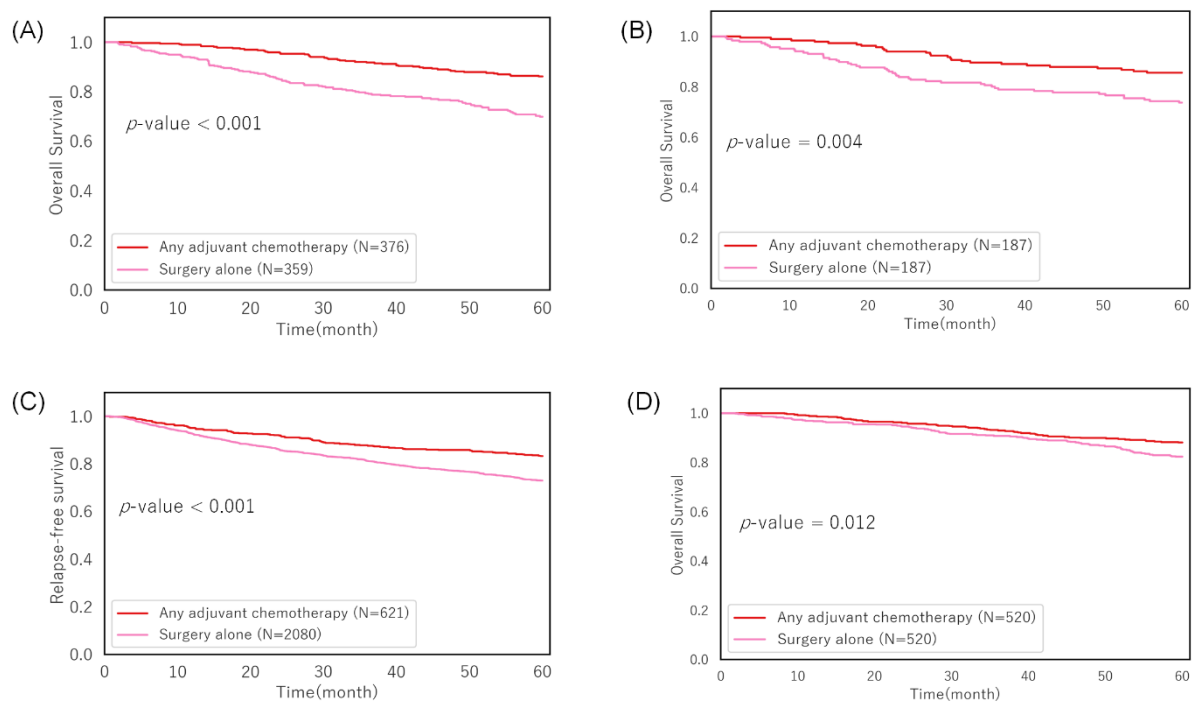
Proximal gastrectomy	8 (1.1%)	85 (3.1%)
Segmental gastrectomy	2 (0.3%)	3 (0.1%)
Local resection	2 (0.3%)	8 (0.3%)
Reconstruction		
B-I	359 (48.8%)	792 (29.0%)
B-II	25 (3.4%)	109 (4.0%)
DT	2 (0.3%)	26 (1.0%)
EG	5 (0.7%)	55 (2.0%)
IP	3 (0.4%)	15 (0.5%)
PP	18 (2.4%)	19 (0.7%)
RY	315 (42.9%)	1,685 (61.8%)
Others	5 (0.7%)	13 (0.5%)
NR	1 (0.1%)	4 (0.1%)
Lymph node dissection		
D0	244 (1.5%)	49 (1.8%)
D1	1,197 (7.6%)	211 (7.7%)
D1+	3,223 (20.3%)	625 (22.9%)
D2	10,489 (66.2%)	1,731 (63.5%)
D2+	533 (3.4%)	85 (3.1%)
Approach		
Laparoscopic	2,828 (17.8%)	565 (20.7%)
Open	12,846 (81.1%)	2,134 (78.2%)
Others	174 (1.1%)	29 (1.1%)
pT-Depth of tumor invasion		
pT1a	71 (9.7%)	-
pT1b	664 (90.3%)	-
pT3	-	2,728 (100%)
pN-Extent of lymph node metastasis		
pN0	-	2,728 (100%)
pN1	-	-
pN2	598 (81.4%)	-
pN3a	137 (18.6%)	-
pN3b	0	-
pStage		
IIA	598 (81.4%)	2,728 (100%)
IIB	137 (18.6%)	-
Proximal margin and distal margin		
PM0 and DM0	727 (98.9%)	2,697 (98.9%)
Others	8 (1.1%)	20 (0.7%)
Residual tumor		
R0	721 (98.1%)	2,685 (98.4%)
Others	14 (1.9%)	42 (1.5%)
Clavien-Dindo classification		
Grade I or none	639 (86.9%)	2,254 (82.6%)
Grade II or higher	71 (9.7%)	331 (12.1%)
Adjuvant chemotherapy		
None	359 (48.8%)	2,104 (77.1%)
S-1 monotherapy	372 (50.6%)	616 (22.6%)
S-1 plus oxaliplatin	43 (0.3%)	0

S-1 plus cisplatin	4 (0.5%)	6 (0.2%)
S-1 plus docetaxel	0	2 (0.1%)

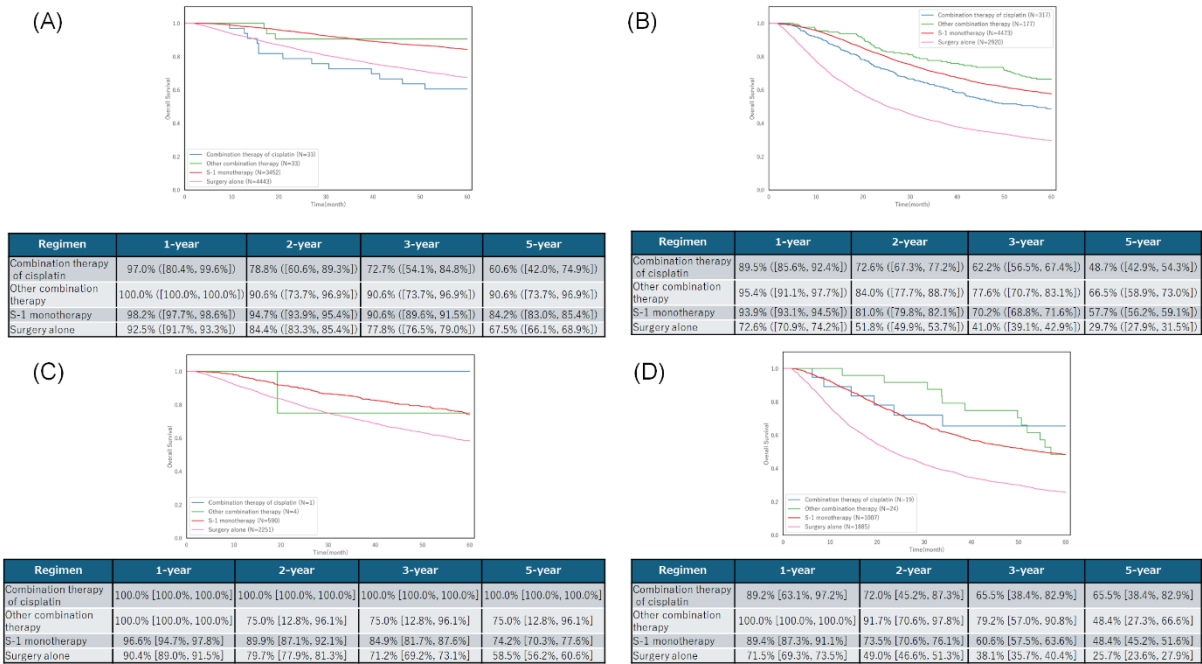
ASA-PS, American Society of Anesthesiologists- physical status; B-I, Billroth I gastroduodenostomy; B-II, Billroth II gastrojejunostomy; CY1, cancer cells on peritoneal cytology; D0, no lymphadenectomy; D1, D1 lymphadenectomy; D2, D2 lymphadenectomy; DM, distal margin; DT, Double-tract method; ECOG-PS, Eastern Cooperative Oncology Group- performance status; EG, Esophagogastrostomy; IP, Jejunal interposition; muc, mucinous adenocarcinoma; NR, Non-resectional surgery; pap, papillary adenocarcinoma; PM, proximal margin; por1, solid type poorly differentiated adenocarcinoma; por2, non-solid type poorly differentiated adenocarcinoma; PP, Pylorus-preserving gastrectomy; R, residual tumor; RY, Roux-en-Y esophagojejunostomy or Roux-en-Y gastrojejunostomy; sig, signet-ring cell adenocarcinoma; tub1, well differentiated tubular adenocarcinoma; tub2, moderately differentiated adenocarcinoma.



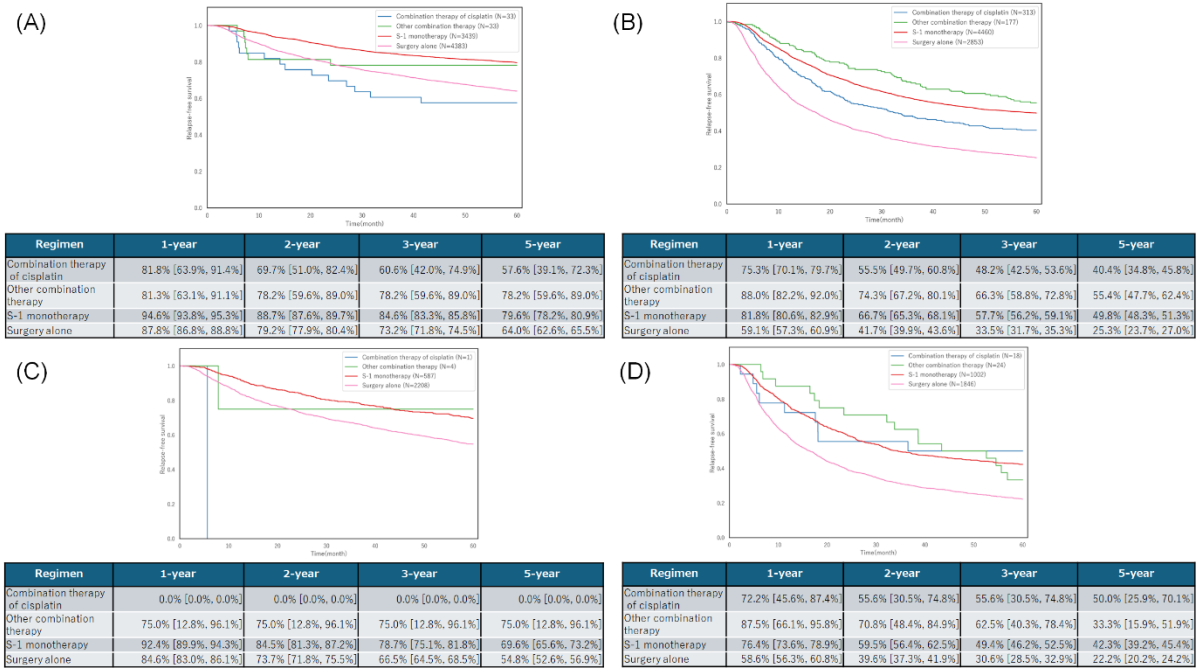
Supplementary Figure S1. Relapse-free survival of the matched all and age 75 or older patients with or without adjuvant chemotherapy at stage II and III. (A) Relapse-free survival of the matched patients at stage II, (B) Relapse-free survival of matched patients at stage III, (C) Relapse-free survival of the matched age 75 or older patients at stage II, (D) Relapse-free survival of matched age 75 or older patients by stage III. Age, sex, American Society of Anesthesiologists classification of physical status, Eastern Cooperative Oncology Group performance status, histology, operative approach, lymphadenectomy, residual tumor, methods of gastrectomy, and Clavien-Dindo classification were adjusted for propensity score matching.



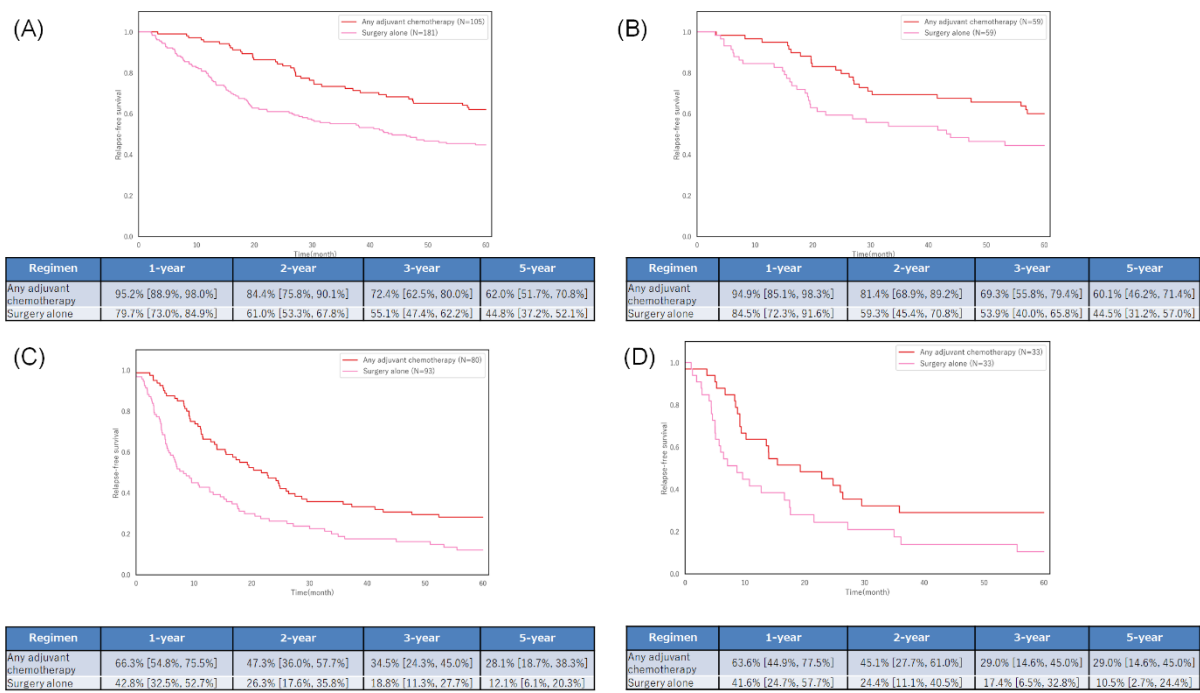
Supplementary Figure S2. Overall survival of pre-matched and matched in patients with pT1N2, T1N3, and T3N0 with or without adjuvant chemotherapy. (A) Overall survival of the pre-matched patients with T1N2 and T1N3, (B) Overall survival of the matched patients with T1N2 and T1N3, (C) Overall survival of the pre-matched patients with T3N0, (D) Overall survival of the matched patients with T3N0. Age, sex, American Society of Anesthesiologists classification of physical status, Eastern Cooperative Oncology Group performance status, operative approach, methods of gastrectomy, and Clavien-Dindo classification which were statistically significant prognostic factors by the univariate analyses were adjusted for propensity score matching.



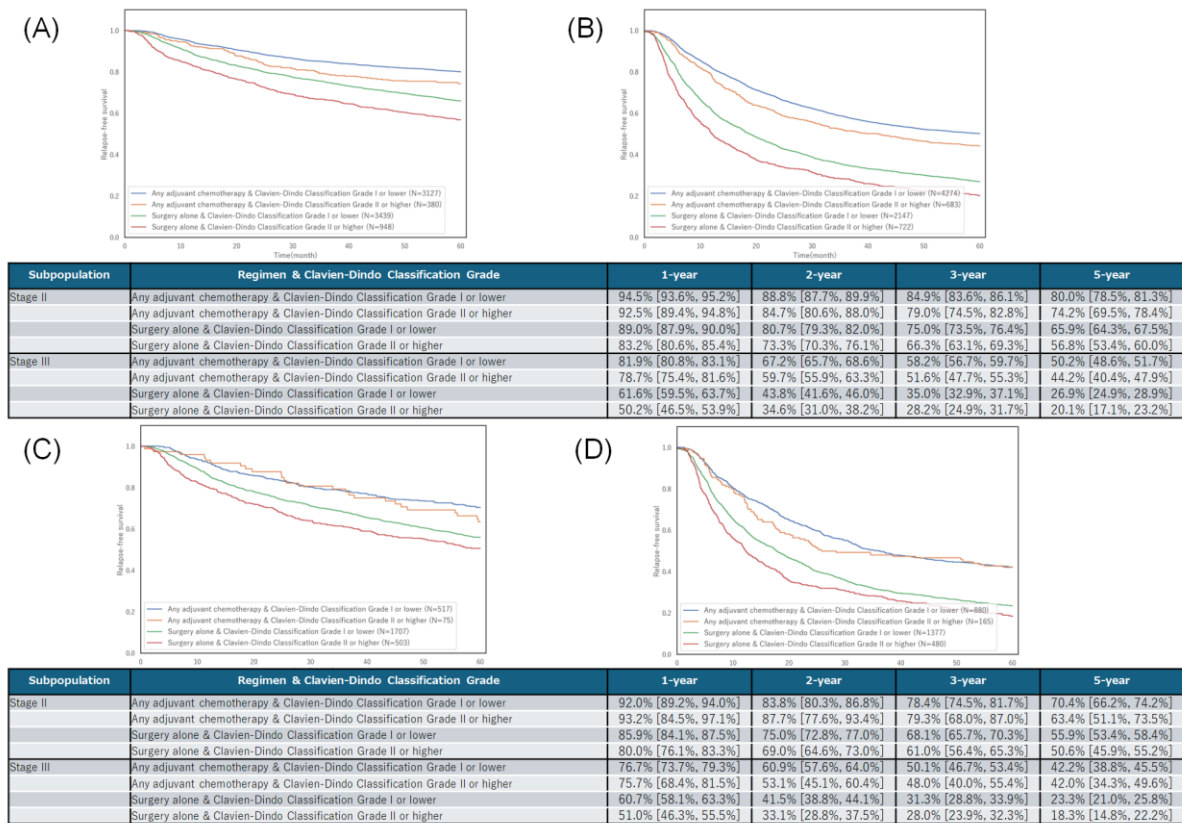
Supplementary Figure S3. Overall survival of all age 75 or older patients at stage II and III treated with adjuvant chemotherapy by regimen. (A) Overall survival of all patients at stage II, (B) Overall survival of all patients at stage III, (C) Overall survival of age 75 or older patients at stage II, (D) Overall survival of age 75 or older patients at stage III.



Supplementary Figure S4. Relapse-free survival of all age 75 or older patients at stage II and III treated with adjuvant chemotherapy by regimen. (A) Relapse-free survival of all patients at stage II, (B) Relapse-free survival of all patients at stage III, (C) Relapse-free survival of age 75 or older patients at stage II, (D) Relapse-free survival of age 75 or older patients at stage III.



Supplementary Figure S5. Relapse-free survival of all age 75 or older patients at stage II or III by Clavien-Dindo classification and adjuvant chemotherapy. (A) Relapse-free survival of all patients at stage II by Clavien-Dindo classification and adjuvant chemotherapy, (B) Relapse-free survival of all patients at stage III by Clavien-Dindo classification and adjuvant chemotherapy, (C) Relapse-free survival of age 75 or older patients at stage II by Clavien-Dindo classification and adjuvant chemotherapy, (D) Relapse-free survival of age 75 or older patients at stage III by Clavien-Dindo classification and adjuvant chemotherapy.



Supplementary Figure S6. Relapse-free survival of pre-matched and matched patients with cancer of gastric remnant with or without adjuvant chemotherapy. (A) Relapse-free survival of the pre-matched patients who have equivalent depth of tumor invasion and extent of lymph node metastasis to stage II, (B) Relapse-free survival of the matched patients equivalent to stage II, (C) Relapse-free survival of pre-matched patients equivalent to stage II, (D) Relapse-free survival of matched patients equivalent to stage III. Age, sex, American Society of Anesthesiologists classification of physical status, Eastern Cooperative Oncology Group performance status, histology, operative approach, lymphadenectomy, residual tumor, methods of gastrectomy, and Clavien-Dindo classification were adjusted for propensity score matching.